

Technical data sheet



Product features

Cooling cabinet 700 l GN 2/1, stainless steel, right door

Model	SAP Code	00014288
--------------	-----------------	----------



- GN / EN size in device: GN 2/1
- Minimum device temperature [°C]: -2
- Maximum device temperature [°C]: 8
- Insulation thickness [mm]: 60
- Control type: Digital
- Opening of device: Hinges on the right
- Automatic defrost: Yes

SAP Code	00014288	Gross Volume [m3]	1.279
Net Width [mm]	693	Net Volume [m3]	1.149
Net Depth [mm]	826	Number of GN / EN	3
Net Height [mm]	2008	GN / EN size in device	GN 2/1
Net Weight [kg]	110.00	Minimum device temperature [°C]	-2
Power electric [kW]	0.227	Maximum device temperature [°C]	8
Loading	230 V / 1N - 50 Hz	Refrigerant	R290
Energy class	D	Climate class	4

Technical data sheet



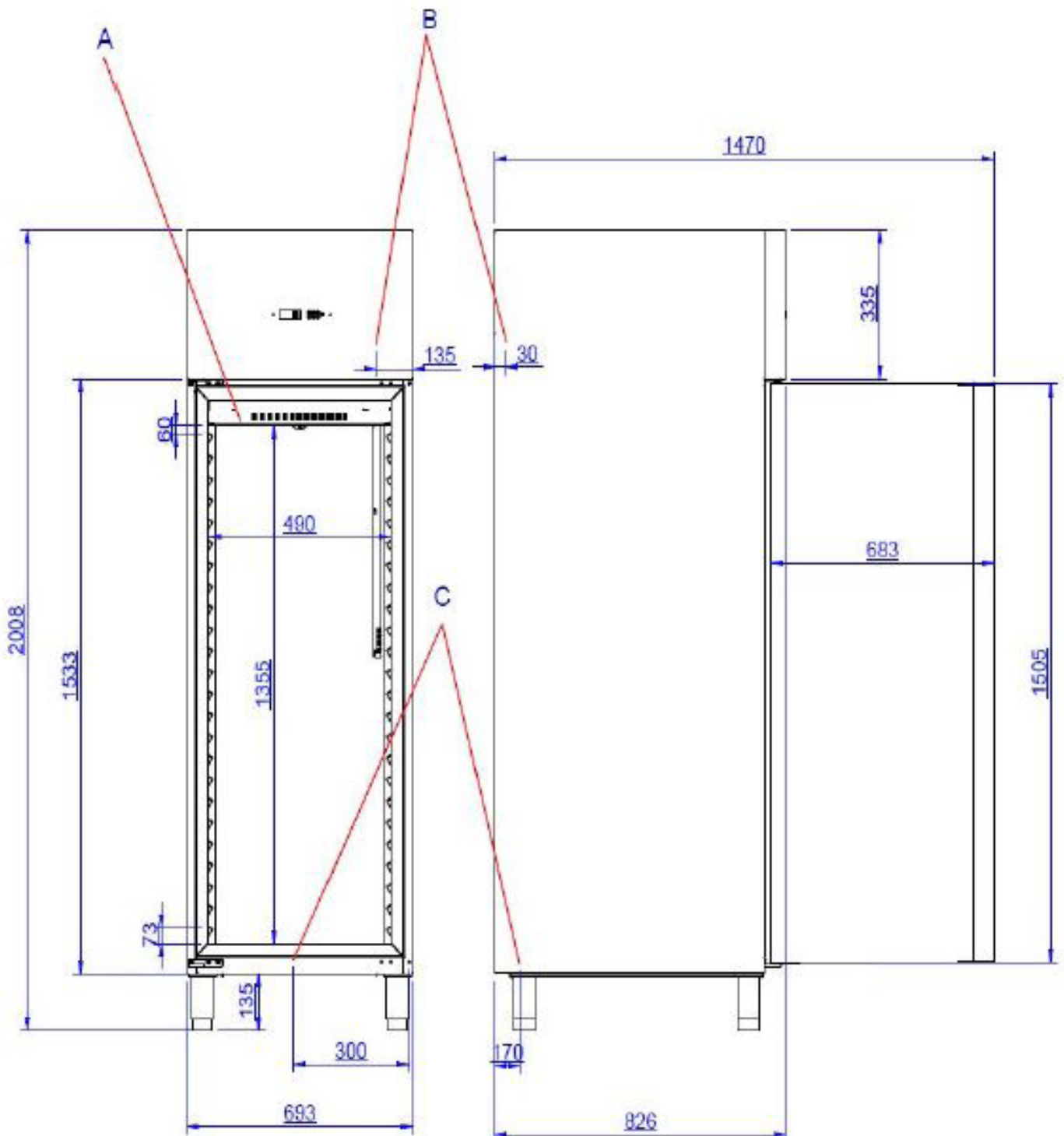
Technical drawing

Cooling cabinet 700 l GN 2/1, stainless steel, right door

Model

SAP Code

00014288



Technical data sheet



Technical parameters

Cooling cabinet 700 l GN 2/1, stainless steel, right door

Model

SAP Code

00014288

1. SAP Code:

00014288

2. Net Width [mm]:

693

3. Net Depth [mm]:

826

4. Net Height [mm]:

2008

5. Net Weight [kg]:

110.00

6. Gross Width [mm]:

700

7. Gross depth [mm]:

850

8. Gross Height [mm]:

2150

9. Gross Weight [kg]:

149.00

10. Device type:

Electric unit

11. Power electric [kW]:

0.227

12. Loading:

230 V / 1N - 50 Hz

13. Energy class:

D

14. Refrigerant:

R290

15. Cooling type:

Dinamic

16. Material:

Stainless steel

17. Min ambient temperature [°C]:

10

18. Max ambient temperature [°C]:

43

19. Device properties 2:

Cooling

20. GN / EN size in device:

GN 2/1

21. Number of GN / EN:

3

22. Gross Volume [m3]:

1.279

23. Net Volume [m3]:

1.149

24. Standard equipment for device:

3 plastic-coated grids GN 2/1

25. Adjustable feet:

Yes

26. Insulation thickness [mm]:

60

27. Opening of device:

Hinges on the right

28. Number of doors:

1

Technical data sheet



Technical parameters

Cooling cabinet 700 l GN 2/1, stainless steel, right door

Model

SAP Code

00014288

29. Unit:

Yes

33. Automatic defrost:

Yes

30. Control type:

Digital

34. Thaving cycle:

Yes

31. Minimum device temperature [°C]:

-2

35. Number of grids:

3

32. Maximum device temperature [°C]:

8

36. Climate class:

4